

Operations- og patientstuen på Nyt OUH



Behandlingsområde vest og øst

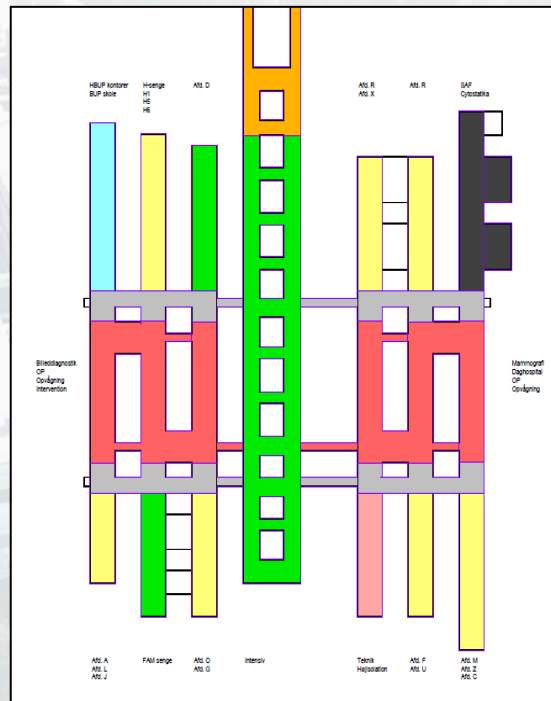


Behandlingsområdet

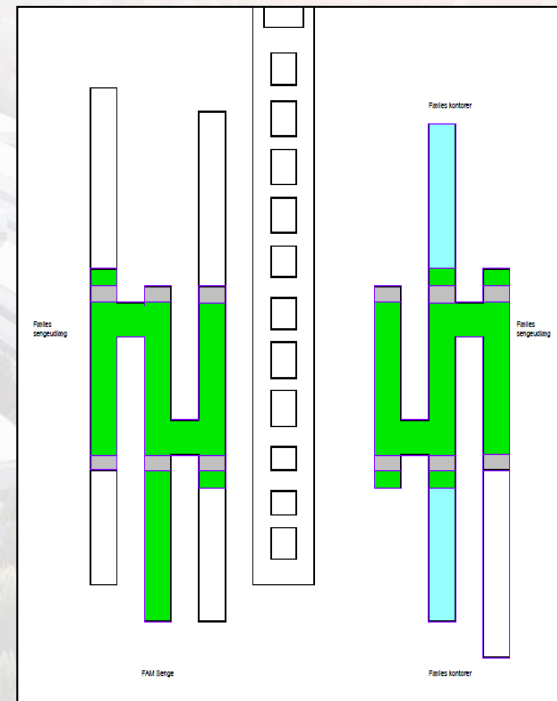
Stueplan



1. sal

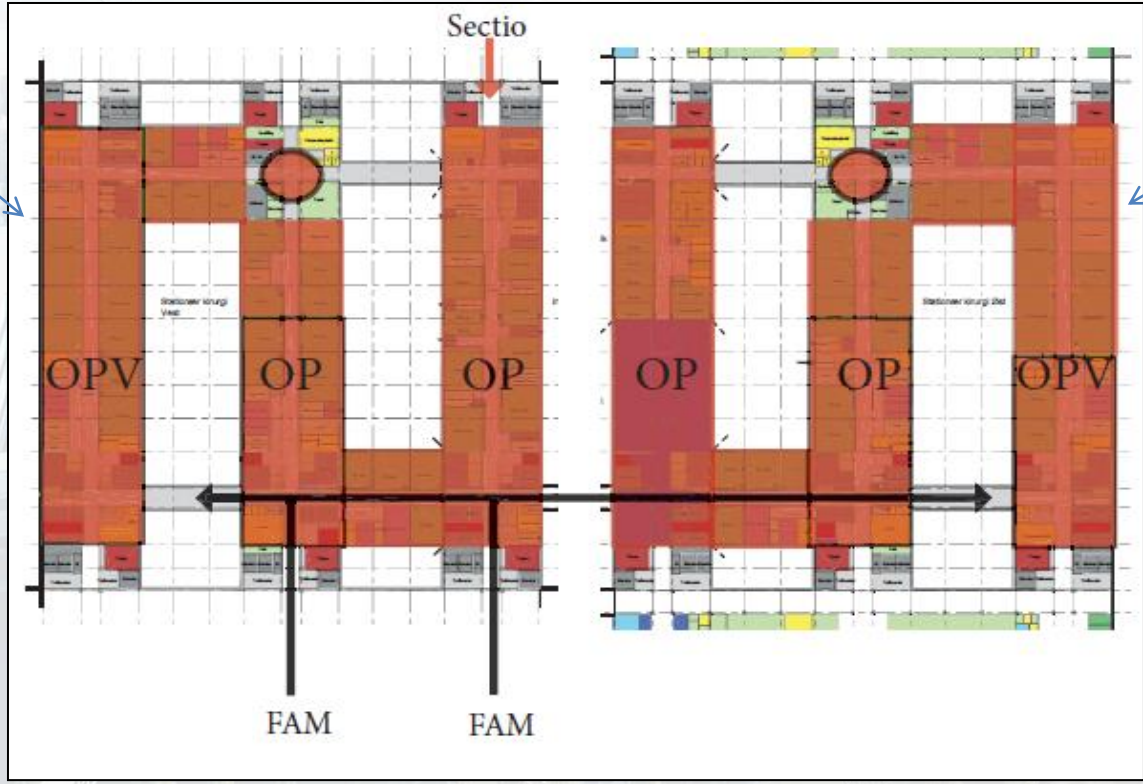


3. sal



Operationsstuerne

OP Vest



OP Øst

Processen frem til i dag

Ideen

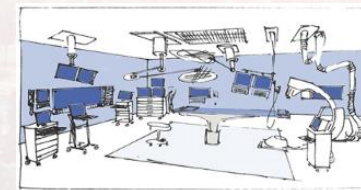


Harmonise

Brugerprocessen



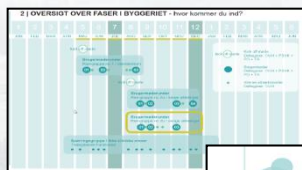
Output



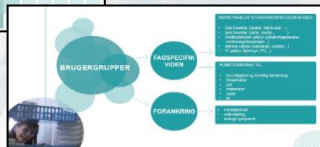
Den videre proces



Task Force – Innovation og klinisk forankring



KONSORTIET
MEDIC
OUH



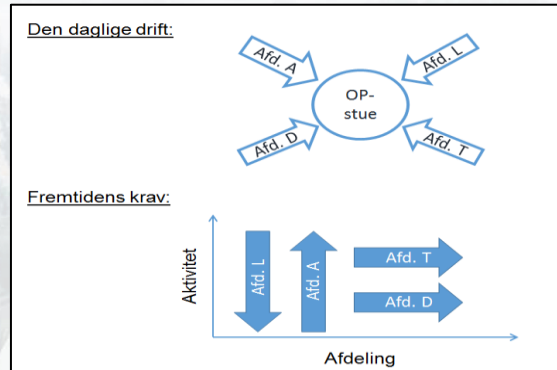
Brugerproces

Taskforce

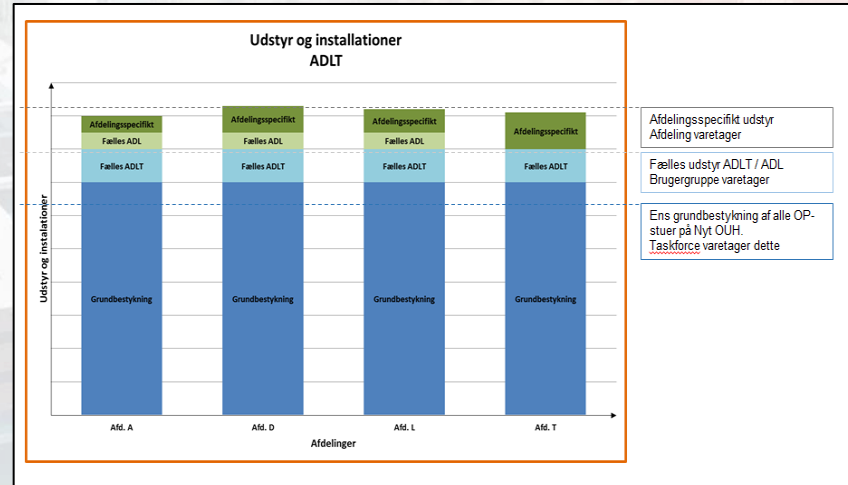
Innovation

?

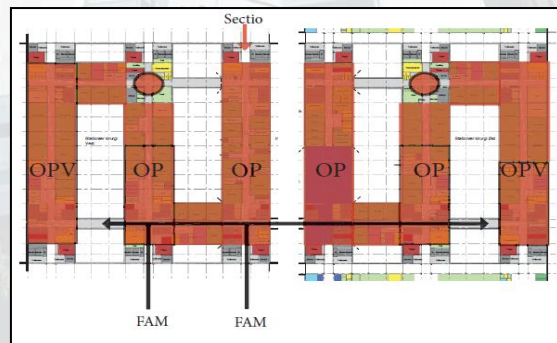
Fleksibelt



Udstyr og installationer



Stationær og dagkirurgisk



Mock up af operationsstue



Klinisk simuleringstest i mock up

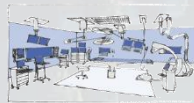
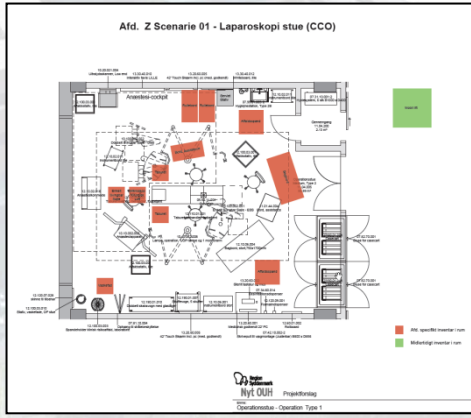
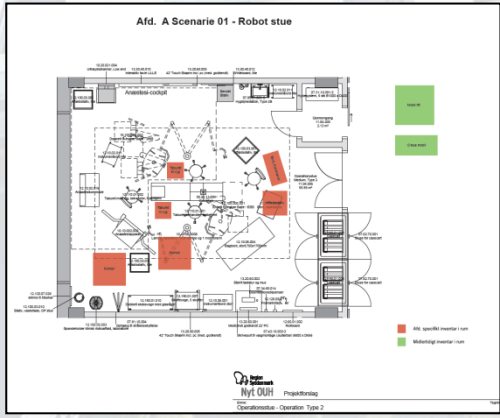
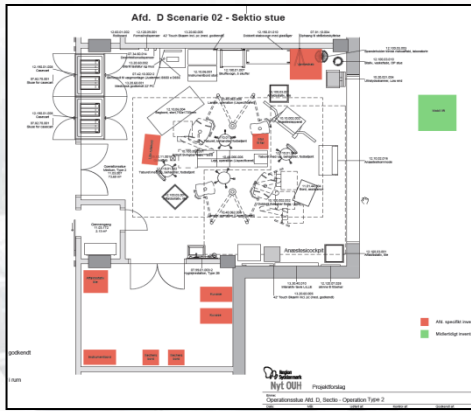
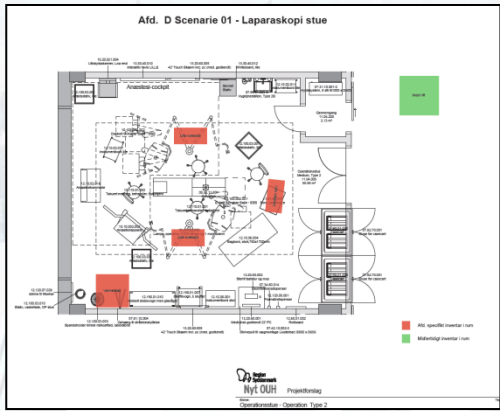


Output – De tre stuetyper

	A	B	C	D	E	F
1	Forslag til rammer for fremtidens standard/grund OP-stuer					
2						
3						
4		- Standard minimumsbestykning				
5				Stuetyper der skal tegnes (Specialudstyr med rødt)		
6				OUZKFE + ADLT		
7				Stue type 1	Stue type 2	Stue type 3
8			Standard-Bestyknin	Lofthængt mikroskop E- (forholdslosp) + 2 (spj)	Sektio/Skopi F/Inæze, M Kranii-Pyg, K skopi #4, O ingen loftsløjer Multibrusme/Ekstenion/Dvig berry skopi/Allo/Odelat #4 O laparotendo-skopi, Robot, dagkirurgi	Hjerte/T
9	Gulv, vægge og loft	Argon			1	1
10		CO2	1			
11		Helium				
12		Bly-afskærmning	x			
13		Gulvafleb	1			1
14		Dialyse-installation				
15		Faraday-bur for MR-scanner				
16		Lys, intelligent/ergonomisk	1			
17		Røntgen-stik	4			
18		Ultralyd-stik	1			
19	Røgsug, diathermi	1	1	1	1	
20	Glas eller anden let modul/væg	1				
21	Teknisk løsning: loftsløjentrollys	1		0	0	
22	Forsyningsøjle, let				1	
23	OP-leje, mobil	1				
24	OP-lamper inkl. monitor	2		1	1	
25	Anæstesi-cockpit bestående af: Anæstesiapparat, patientmonitor, sprøjetpumper m. v.	1				
26	Vægmonteret storskærm (Alt incl. røntgenbillede)			1	1	
27	Ultralyd	1				
28	Røntgensystem fluoroskopi (C-bue), mobil	0		1	0	
29	Laser, kirurgisk	0	1			
30	Gulvsug, sæt/gulv	1			1	
31	Endoskopiskærm			3	3	
32	Loftlift					
33	LAF-enhed					
34	Hjerte-lunge-maskine system				1	
35	Heater-cooler				1	
36	Cell-saver (Autotransfusionssystem)				0	

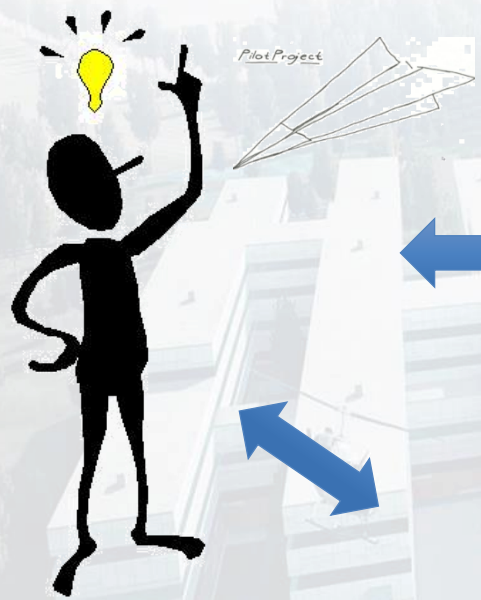


Output – Eksempler på de specifikke stuer

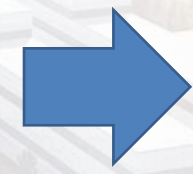


Pilottest - Beslutningen

Ideen



Placering



Direktion

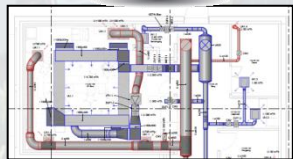
Koncept



Aftestes

X 52+

FUNCTIONAL TESTING

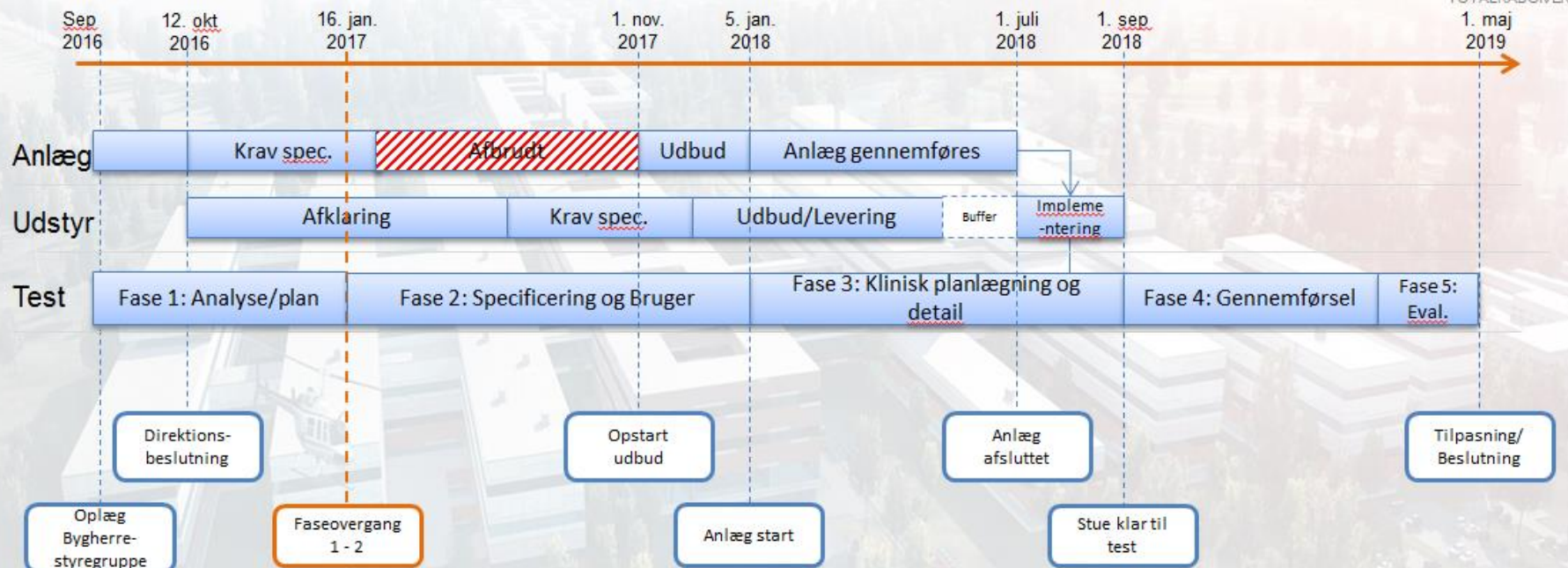


DESIGN

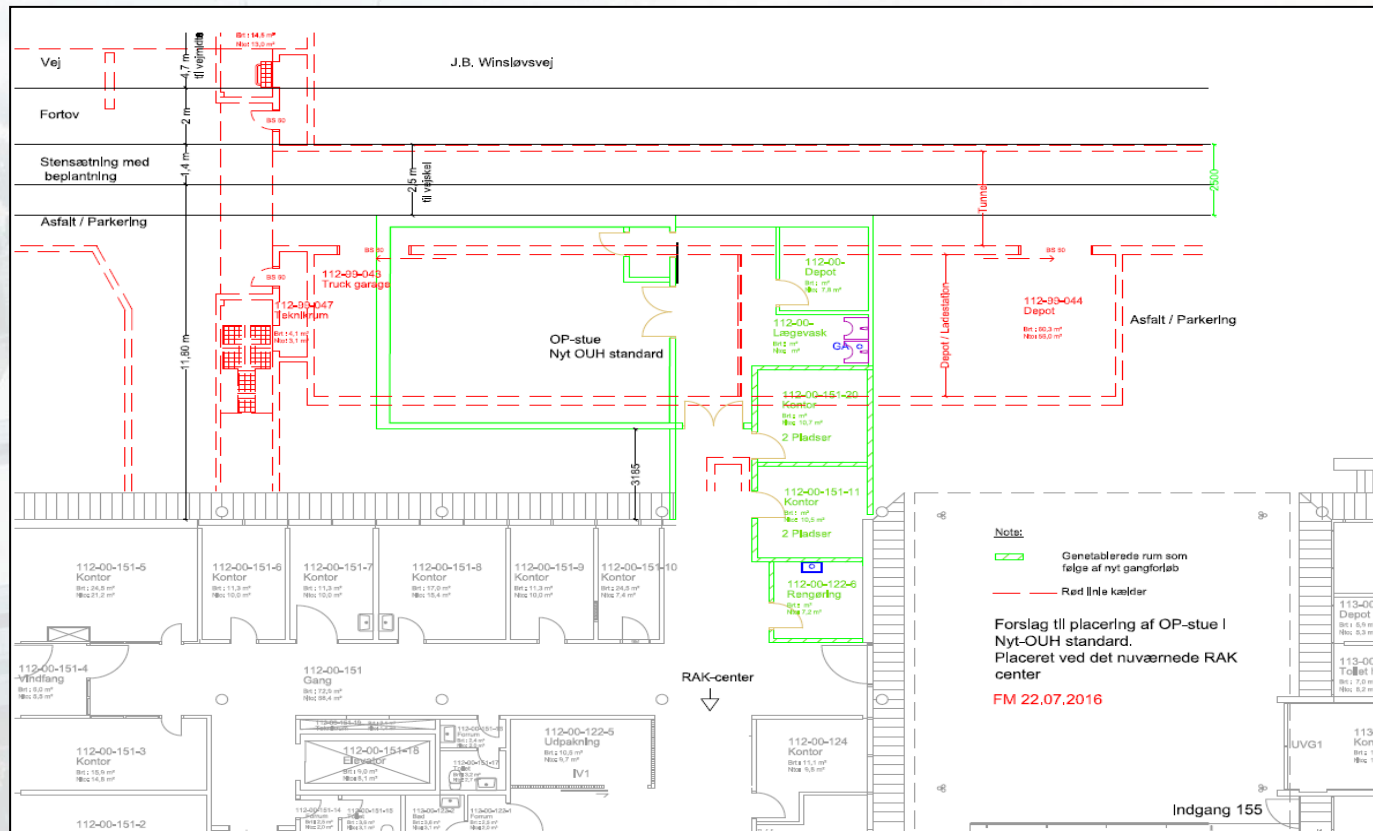


FLEXIBLE

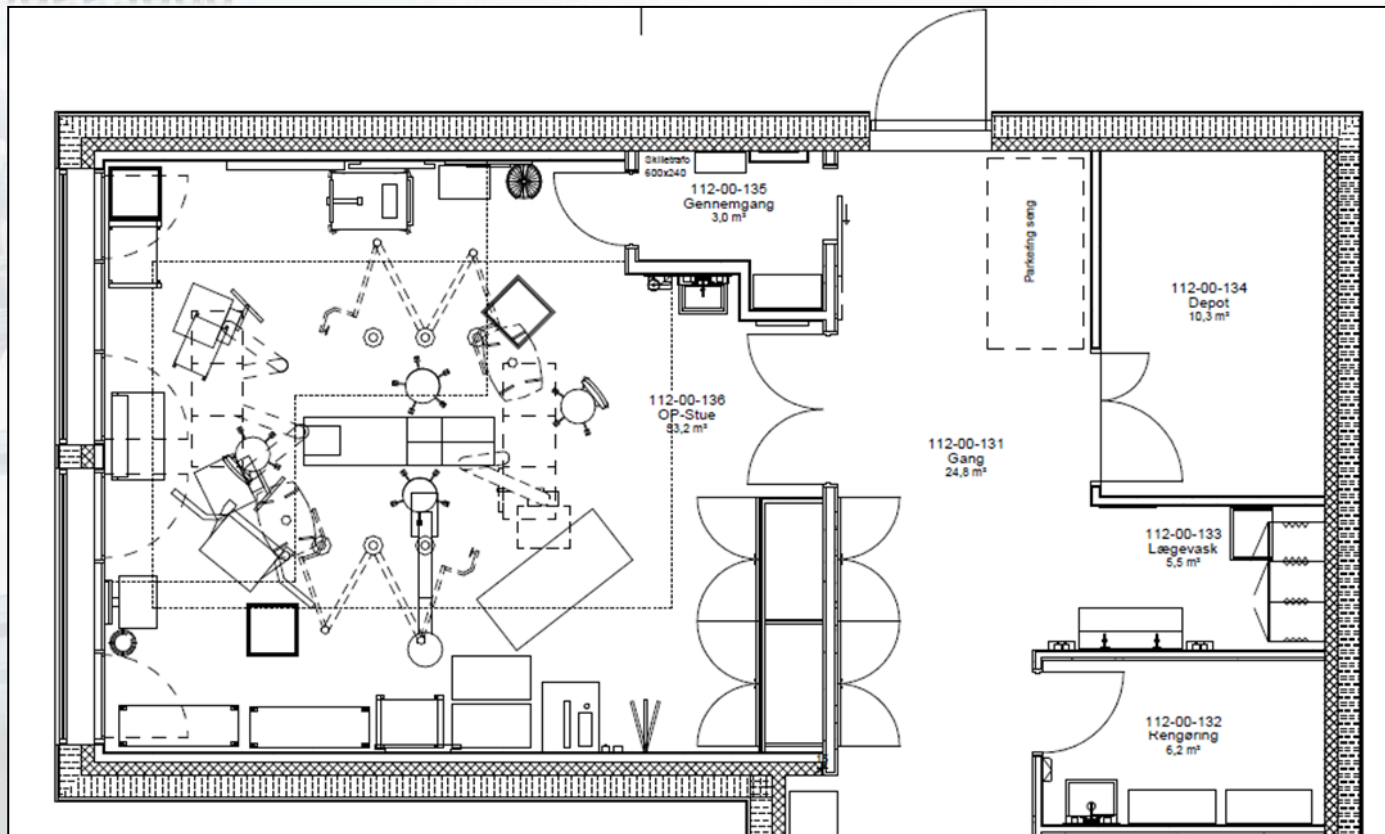
Tidsplan test OP



Anlægssagen



Anlægssagen



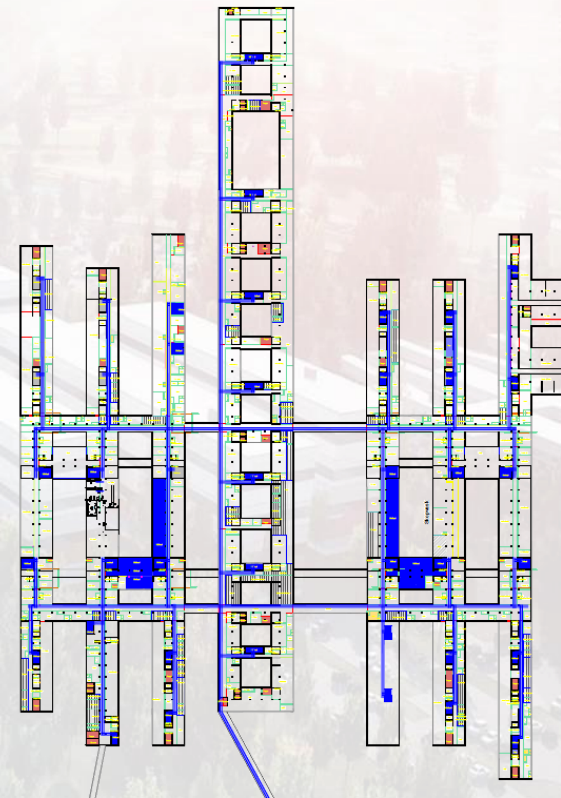
Anlægssagen – Lige nu



Klinisk test



Logistik



Arbejds- og patientmiljø

POSITIVE WORK ENVIRONMENT



EASY

**WORK SAFE
BE SAFE** !



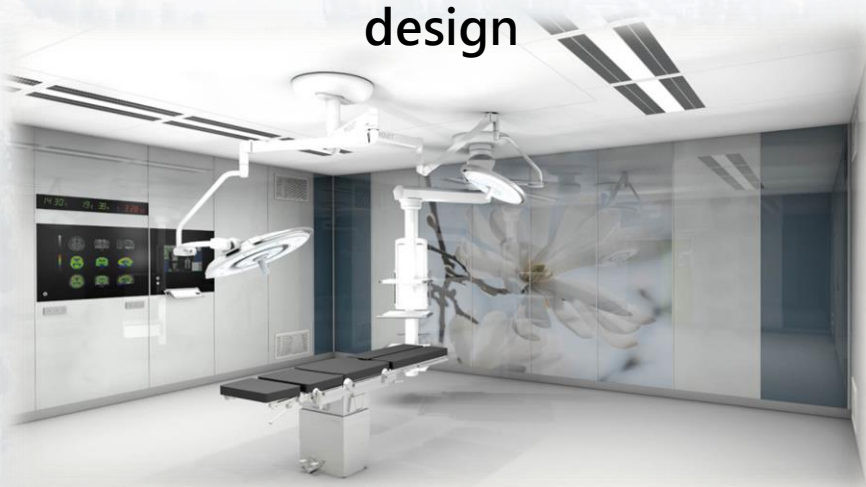
LOW NOISE

LOW NOISE



Design/indretning

Wall/Room
design



Lighting



Ceiling



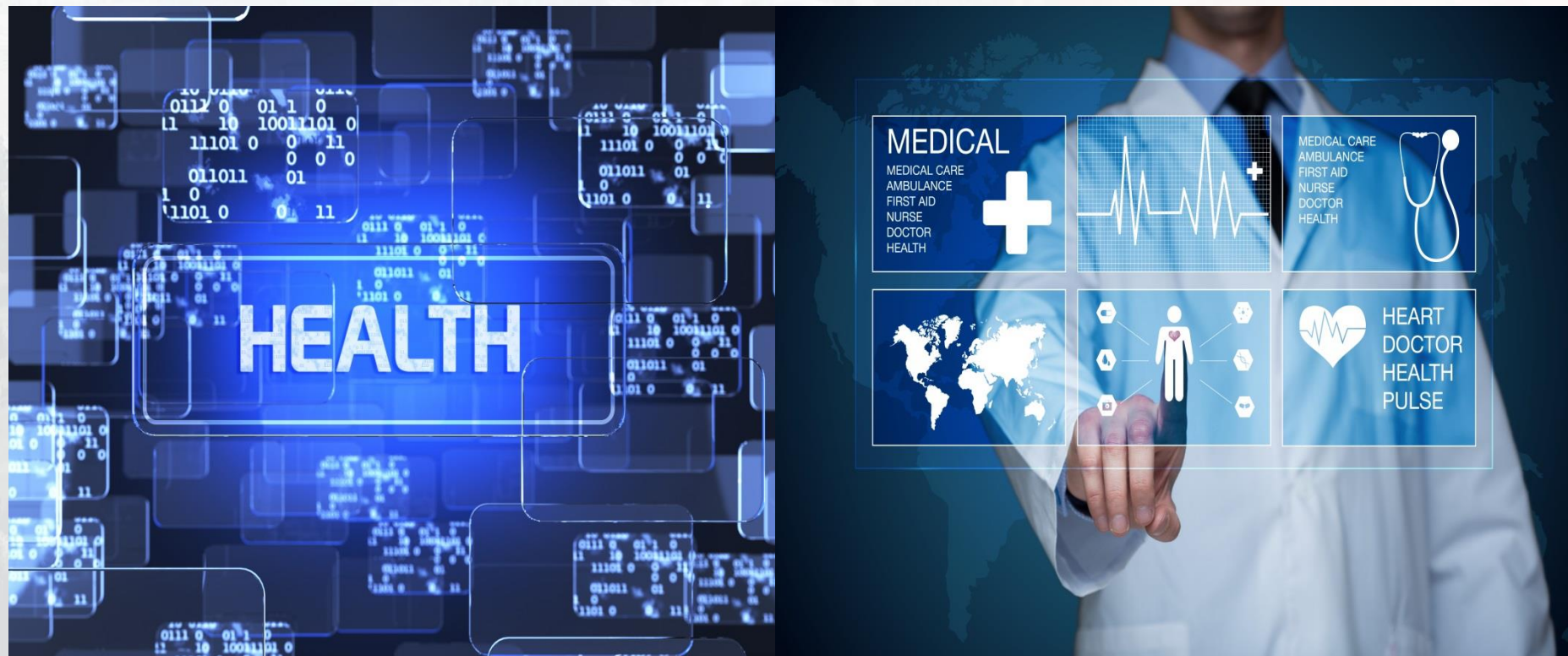
Art



Hygiejne



IT & systemer



Involvering af klinik & service Org.



Kommunikation



Evaluering/slut rapport



Indhold	
Sammenfatning	4
1 Indledning	5
Formål	5
Ordforklaring	5
2 Baggrund	6
Vision for Nyt OUH	6
Baggrund for pilottest af fremtidens operationsstue	6
Erfaringer med opbygning af nye operationsstuer i Danmark og udlandet	6
3 Undersøgelhedsdesign og datagrundlag	7
Afgrænsning	7
Evalueringsdesign, dataindsamling og analyse	7
4 Flexibilitet	8
4.1 Standardiseret indretning	8
4.2 Pladsforhold på operationsstuen	12
4.3 Skift fra ét kirurgisk speciale til et andet	13
Funktionalitet	14
5.1 Ventilation	14
5.2 Adgangsveje til operationsstue	19
5.3 Vareforsyning og opbevaring	21
5.4 Affaldshåndtering	24
5.5 Gulvbelægning inklusivt afløb	25
5.6 Lamper og monitor	28

Implementering af resultater



Direktion



Pilotprojekt – Afsluttet

2019

Two crossed checkered flags, commonly known as racing flags, are positioned in the center of the slide. The flags are black and white, and they are mounted on silver poles that cross each other. The background is a faded, aerial view of a large, modern building complex, likely a hospital or university campus, with greenery and parking areas visible.